

24/7

型號
AAKACZ460
AAKACZ462
系列操作說明書

MODEL AAKACZ460 OR AAKACZ472
INSTRUCTION MANUAL



PISTOL

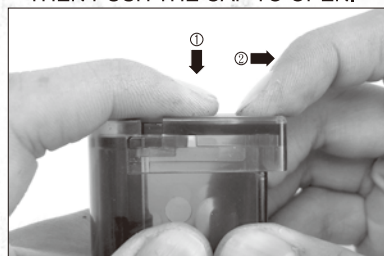


KWC® KIEN WELL TOY INDUSTRIAL CO., LTD
www.kwcgun.com

台南市仁德區義林路168巷89號
NO.89, LN. 168, YILIN RD.,
RENDE DIST., TAINAN CITY
71752, TAIWAN (R.O.C.)
TEL: +886-6-2798175
FAX: +886-6-2798176
sales@kwcgun.com
www.kwcgun.com

裝彈器的使用 BB LOADER

1. 先下壓蓋子卡榫，再往外推出蓋子。
PRESS THE BUTTON AS MARK 1,
THEN PUSH THE CAP TO OPEN.



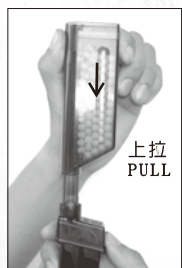
2. 置滿B.B彈於裝彈器內後，推入蓋子卡緊。
LOAD BB AND PUT BACK THE CAP.



3. 彈匣上部置入裝彈器內。
ATTACH THE LOADER TO THE
MAGAZINE AS PICTURE.



4. 拉伸導管至盡頭，搖入B.B彈。
PULL THE LOADER UP, THEN SHAKE
IT TO MAKE BB FALL INTO GUIDE
PIPE.



5. 裝彈器本體往下壓，擠入B.B彈於彈匣內。
PUSH THE LOADER DOWN. BB WILL
BE FORCED INTO THE MAGAZINE.



註：本彈匣最多可裝入25顆BB彈。
P.S. 1. CAPACITY OF THIS
MAGAZINE IS 25 ROUNDS.

▲注意：本裝彈器是為雙排彈設計，故不良的
B.B彈將是造成裝彈器損壞的原因。
▲CAUTION: LOW QUALITY BB MIGHT
CAUSE DAMAGE TO THE
LOADER.

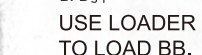
射擊前的準備 BEFORE SHOOTING



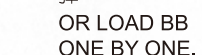
1. 按下卡榫
PRESS THE BUTTON

2. 取出彈匣
RELEASE THE MAGAZINE

3-1. 使用裝彈器裝填
B.B彈。
USE LOADER
TO LOAD BB.



3-2. 亦可逐一裝入B.B
彈。
OR LOAD BB
ONE BY ONE.



4. 插入彈匣(有"卡嗒"聲)，準備射擊。
INSERT THE MAGAZINE UNTIL SOUND
"CLICK".

安全裝置 SAFETY

可射擊
SAFETY OFF



保險
SAFETY ON



射擊 SHOOTING

1. 上蓋必須往後拉至底後才釋放，方能借彈
簧回復力使B.B彈上膛。
MAKE SURE TO PULL SLIDE BACK
UNTIL SOUND "CLICK" TO ENSURE
BB IS PROPERLY CHAMBERED.

2. 射擊。
PULL THE TRIGGER TO SHOOT.



3. B.B彈用完時，上蓋會卡住。
HOLD OPEN WHEN BB RUNS OUT.

4. 請先釋放卡榫後，再扣發扳機射擊，以減
低商品之故障。
RELOAD BB AND REINSERT THE
MAGAZINE. RELEASE SLIDE
STOPPER TO CONTINUE SHOOTING.

下壓卡榫，釋放上蓋
PRESS SLIDE STOPPER TO
RELEASE THE SLIDE.



拆解 DISASSEMBLY

1. 取出彈匣(手扶彈匣，以避免掉落)。
HOLD THE MAGAZINE WHEN
RELEASING IT TO PREVENT FROM
DROPPING.



2. 上蓋往後拉至缺口處，導管卡榫順時針旋
轉90度後往外取出。
PULL THE SLIDE TO HOLD OPEN
POSITION. SPIN THE BARREL
GUIDE CATCH BY 90° DEGREE AND
REMOVE IT.



3. 導管卡榫取出後扣引扳機，讓活塞擊發，
然後上蓋往前推，即可分解上蓋和本體。
PULL THE TRIGGER TO RELEASE
PISTON. SLIDE WILL MOVE
FORWARD. REMOVE SLIDE FROM
FRAME.



故障的原因與排除 BREAK DOWN FAQ

1. 卡彈的清除：
不良B.B彈是造成卡彈的原因，上蓋若未回
復至正確位置，可能的原因就是卡彈，請
以細棒清除B.B彈。

BB JAM:
LOW QUALITY BB IS THE MAIN
REASON CAUSING JAMMING. USING
NARROW STICK TO CLEAR IT OUT IS
RECOMMENDED.

2. 如果連續拉動上蓋，即是連續進彈，所以
請每拉動上蓋一次，就做一次的射擊。
ONE BB WILL BE CHAMBERED BY
EACH PULL OF SLIDE. ALWAYS
SHOOT AFTER EACH PULL OF SLIDE.

3. 使用一段時間後，請再次潤滑(噴砂油脂)
上蓋滑動處及氣缸與活塞滑動處。
LUBRICATE THE PISTON AS PICTURE
AFTER A PERIOD OF USAGE.



WARNING 警告

請務必嚴格遵守 使用說明指導書

For your safety, please read this manual carefully before use.

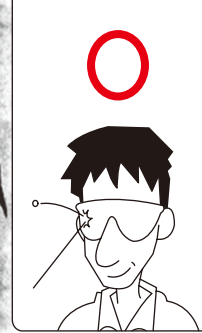
此低動能遊戲用槍是針對喜愛射擊運動的消費者所開發。避免因使用方法不正確或改造所發生的故障或事故，請務必詳讀說明書，正確的操作享受愉快的射擊運動。

- 除了發射時外，不要將手指頭掛在板機上。
- 選擇安全與適當標靶
- 在非使用期間，請保持保險關閉且退彈的狀態，就算在非使用狀態，也要如同自己裝彈。
- 如任何的機械產品，槍的保險也可能失效。即使在保險關閉的狀態下也請小心的操作此槍，請勿將槍口對人。
- 千萬不要對堅硬或平坦表面、水面射擊，以避免跳彈。
- 請妥善保管產品在未成年孩童無法伸手取得的場所。
- 每次使用前後都應該檢查擋彈物，假如擋彈物表面有磨損失效或是反彈時請停止使用。
- 請使用高品質BB彈，請勿使用①口徑大於6mm②表面不平滑的③重複使用過的BB彈④非本說明書指名的發射物。
- 檢查任何掉落之槍枝，以確保未影響其功能。

This airsoft is intended for recreational or training purposes. To prevent improper handling, modification or alteration causing malfunction or accident, please read the owner's manual carefully. Enjoy the pleasant shooting experience by proper operation.

- Do not put your finger on the trigger except shooting.
- Please choose safe and proper target.
- Please always keep the airsoft on safe and unloaded when not using.
- Like all mechanical devices, an airsoft safety can fail. Always handle the airsoft safely even when the safety is "on safe". Never point the airsoft at any people.
- Avoid ricochet. Never shoot at a hard or flat surface or at water.
- Keep the airsoft out of reach for small children.
- Your backstop should be inspected for wear before and after each use. Discontinue use of the backstop if surface shows signs of failure or ricochet.
- Only use high quality BB. Never use ① BB diameter larger than 6mm ② BB with unsmoothed surface ③ reused BB that has been fired ④ incorrect projectiles not design for this airsoft
- Check any gun that has been dropped to ensure that its function has not been affected.

★使用玩具槍前，請務必戴上保護眼鏡或面罩。
★Always wear eye protection when using airsoft.



★使用玩具槍前，請務必詳讀說明書內容。
★Read the owner's manual before using the airsoft.



★不可攜帶玩具槍在公共場所行走，請務必裝在袋子或盒子內。

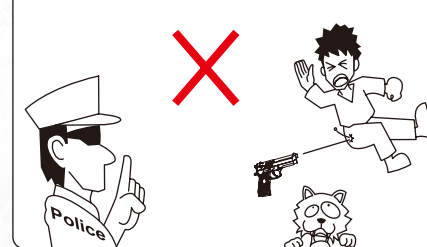
★Always transport an airsoft in a locked carrying case. Make sure it is unloaded and on safe.



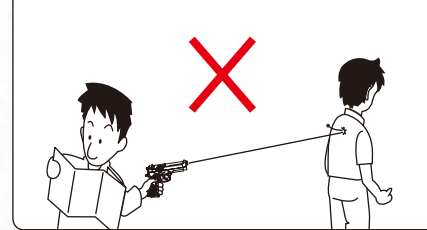
★請不要由槍口向內探視。
★To Avoid accidental discharge, do not look directly into the barrel.



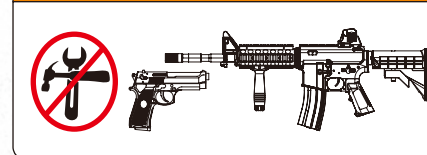
★請不要在公開場合使用玩具槍，也請不要拿玩具槍對準人或動物。
★Never brandish or aiming this airsoft at any people or domestic animals. Brandish this airsoft in public is dangerous and may be a crime.



★請確認後再發射BB彈方向，附近無人或動物存在。
★Always be aware of your surrounding before and during shooting and select a safe area for target practice.



★不可任意改造或加工玩具槍，私自改造加工會造成產品損壞、保固失效，導致使用上不安全，甚至觸法送辦。
★Disassemble, modify, or alter of your airsoft may cause malfunction, void your warranty and may make it unsafe to use.

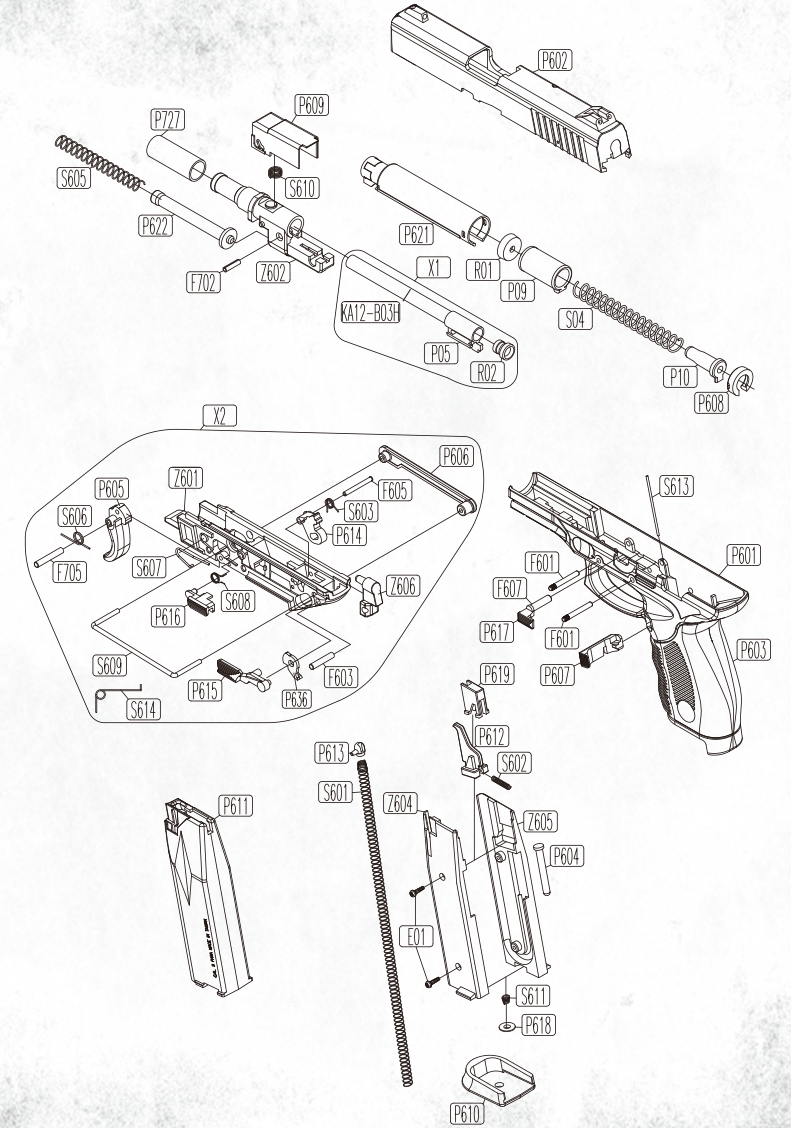


Do not display this pistol in public—it may confuse people and may be a crime. 請不要忘了，雖然自己知道這只是玩具，但不知道的人，會以為這是真槍。

AAKACZ46 系列 零件表 AAKACZ46 SERIES PARTS LIST

NO.	零件名稱	UNIT	NO.	零件名稱	UNIT
P05	槍管接筒	BARREL CONNECTOR	P635	彈匣內套(右)	MAGAZINE WEIGHT (R)
P09	活塞	PISTON	Z606	活塞固定座	PISTON BASE
P10	彈簧支座	SPRING STOCK	R01	活塞迫緊	PISTON PACKING
P601	槍身本體	FRAME	R02	子彈迫緊HOP-UP	RUBBER CHAMBER
P602	槍身上蓋	SLIDE	KA12-B03H	槍管HOP-UP	INNER BARREL
P603	槍柄	GRIP			
P604	彈匣壓簧導桿	MAGAZINE SPRING GUIDE	F601	軸(擊鐵箱用)	PIN (CHASSIS)
P605	扳機	TRIGGER	F603	軸(固定座用)	PIN (PISTON GUIDE)
P606	扳機連桿(右)	TRIGGER BAR(R)	F605	平頭軸(活塞卡榫用)	PIN (PISTON CATCH)
P607	彈匣卡榫	MAGAZINE CATCH	F607	軸套(導管卡榫用)	OUTER BARREL CATCH SLEEVE
P608	氣缸後罩	CYLINDER REAR COVER	F702	彈簧銷	SPRING PIN
P609	導管配件	OUTER BARREL ACCESSORY	F705	平頭軸(活塞卡榫用)	PIN (PISTON CATCH)
P610	彈匣底座	MAGAZINE BASE			
P611	彈匣本體	MAGAZINE FRAME	S04	活塞壓簧	PISTON SPRING
P612	子彈卡榫	AMMO CATCH	S601	彈匣壓簧	MAGAZINE SPRING
P613	彈匣滑粒	MAGAZINE FOLLOWER	S602	子彈卡榫壓簧	AMMO CATCH SPRING
P614	活塞卡榫	PISTON CATCH	S603	活塞卡榫扭簧	PISTON CATCH SPRING
P615	保險(左)	SAFETY(L)	S605	槍管導管壓簧	OUTER BARREL SPRING
P616	上蓋止動片	SLIDE STOPPER	S606	扳機扭簧	TRIGGER SPRING
P617	導管卡榫	BARREL CATCH	S607	導管卡榫扭簧	BARREL GUIDE CATCH SPRING
P618	彈匣底座卡榫	MAGAZINE BASE CATCH	S608	止動片扭簧	SLIDE STOPPER SPRING
P619	子彈卡榫配件	AMMO CATCH ACCESSORY	S609	扳機連桿(左)	TRIGGER BAR(L)
P621	氣缸	CYLINDER	S610	導管配件壓簧	OUTER BARREL ACCESSORY SPRING
P622	導桿	RECOIL GUIDE	S611	底座卡榫壓簧	MAGAZINE BASE CATCH SPRING
P636	保險釋放件	SAFETY RELEASE	S613	彈匣卡榫線簧	MAGAZINE CATCH SPRING
P727	槍管套(短)	OUTER BARREL SLEEVE	S614	扳機連桿左扭簧	TRIGGER BAR(L) SPRING
			E01	⊕2.3X8束鉸熱螺絲	SCREW 2.8X8
Z601	擊鐵箱	CHASSIS			
Z602	槍管導管	OUTER BARREL	X1	內槍管組件	INNER BARREL UNIT
P634	彈匣內套(左)	MAGAZINE WEIGHT (L)	X2	擊鐵箱組件	CHASSIS UNIT

AAKACZ46 系列零件分解圖 AAKACZ46 SERIES EXPLORED VIEW



※零件有時為了改良而不經預告變更。
Spare parts may be modified for quality improvement
And such modification may be without advance notice.